

A parcel identification number, also known as a parcel number or a “PIN” is a unique number that identifies a specific parcel of real estate. The number is assigned by the Lee County Assessment Office and can be found on most property related correspondence from Lee County, including your tax bill.

JOHN F. FRITTS - LEE COUNTY TREASURER		REAL ESTATE TAX BILL				OFFICE MONDAY - FRID	
PARCEL NUMBER	TOWNSHIP	TAX CODE	CLASS CODE	2012 PAYABLE	2013		
07-08-05-234-001	Dixon	07001	0060				
Taxing Body	Prior Year Rate	Prior Year Amount	Current Rate	Current Amount	Pension Amount	Library Amount	
DIXON PSUD 170	4.5497	\$2,963.54	4.4620	\$2,650.52	\$55.65	\$0.00	
SVCC SCHOOL DIST 506	0.4421	\$287.97	0.4418	\$261.27	\$0.00	\$0.00	
LEE COUNTY	0.7991	\$520.52	0.8273	\$489.24	\$51.09	\$0.00	
DIXON TOWNSHIP	0.1724	\$112.30	0.1812	\$107.16	\$9.11	\$0.00	
DIXON TWP ROAD/BRIDGE	0.2070	\$134.83	0.2175	\$128.62	\$0.00	\$0.00	
CITY OF DIXON	1.6985	\$1,106.35	1.7758	\$1,050.15	\$162.63	\$94.15	
DIXON FIRE-CITY	0.4871	\$317.28	0.5134	\$303.61	\$256.12	\$0.00	
DIXON PARK DISTRICT	0.4657	\$303.99	0.4767	\$281.91	\$11.83	\$0.00	
Totals	8.8228	\$6,748.78	8.8167	\$6,272.48	\$648.43	\$94.15	

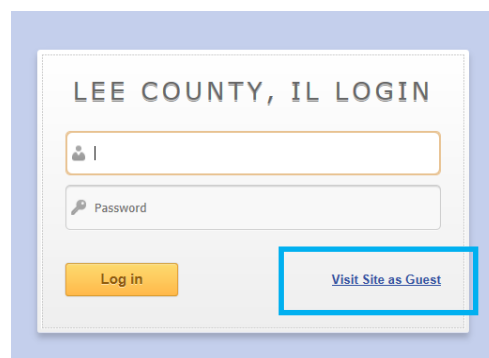
If you do not have a copy of your tax bill available you can also determine your property’s PIN number using the Lee County GIS Portico Website. (Note: You will need to temporarily allow pop-ups for this website.)

- 1) Log in to the Lee County Website: www.leecountyil.com
- 2) Click on the GIS/MAPS icon on the home page.

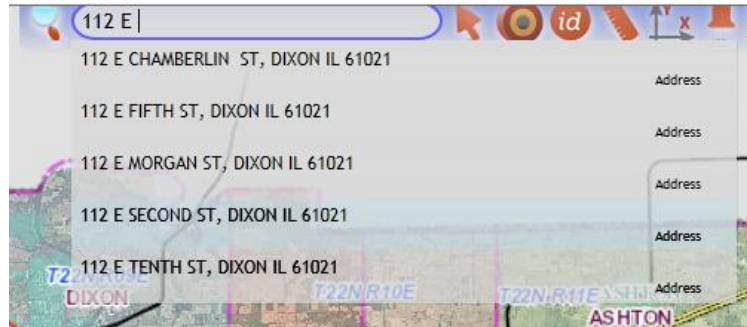


GIS/Maps

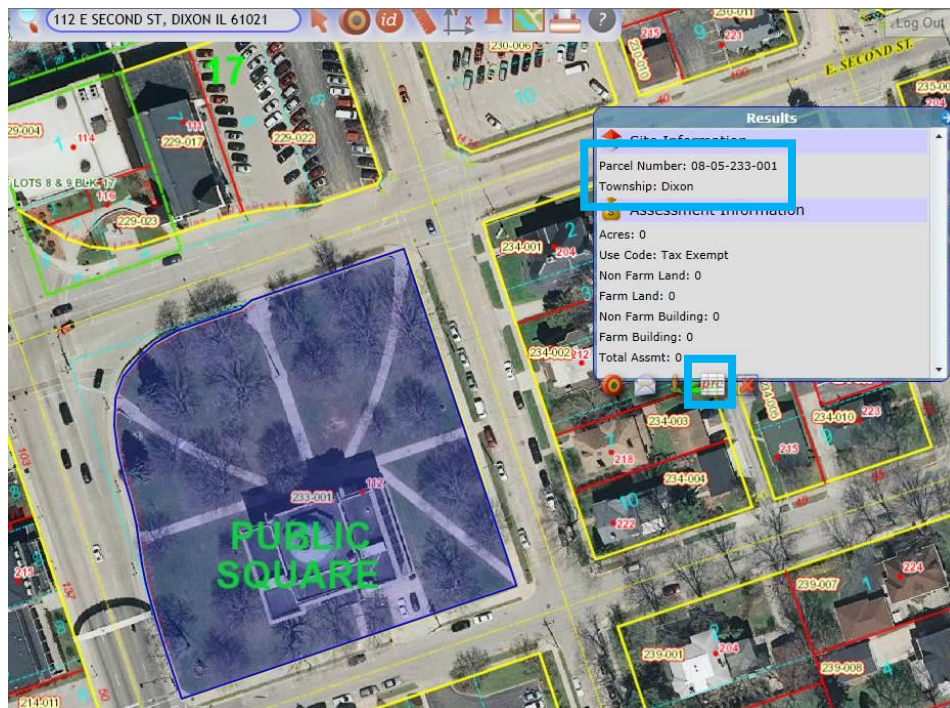
- 3) Click on the GIS Portico Website link which will bring up a login window.



- 4) Enter website as a guest, and accept the disclaimer.
- 5) Type your address in the search window located at the top (center) of the map page. Possible matches will start to show below the window. The more you type, the more refined the search will become.



- 6) From the drop down list, select the address you are searching for, click on it and the map will zoom to that parcel. (You do not need to finish typing the address once you see the one you want.)



- 7) The selected parcel is highlighted in blue and a results window pops up showing basic parcel information including the PIN. To find the tax bill amount, click on the PRC icon at the bottom of the results window to view the Property Record Card.

A new window will pop-up (be sure to disable your pop-up blocker!) displaying more detailed information, including the most recent tax bill amount.



FINDING MY PARCEL IDENTIFICATION NUMBER (PIN)

www.leecountyil.com

Date: 02-19-2014

Lee County, IL Property Record Card

Page

PIN#: 0805233001		Property Class: Tax Exempt		Lot Acres: 0			
Property Information				Legal Information			
Property Address: 112 E SECOND ST				Tax Description: SECT/LOT:00 TWP:00 RNG/BLK:028 DIXON EX RD IN BK 8812-773 LEE COUNTY COURTHOUSE			
Owner Information: NA				Deed Book/Page: -			
				Homestead Exemptions			
				Exempt Parcel			
Current Assessment				Tax Information			
Farm Land	Farm Building	Non-Farm Land	Non-Farm Building	Total	Tax Year	Tax Rate	Taxes
0	0	0	0	0	2000	8.7681%	\$0
Sales Information							
No sales data for last 3 years							

Note: This parcel is the Old Lee County Courthouse which is tax exempt, therefore, the tax amount is zero.